

Dove Prism

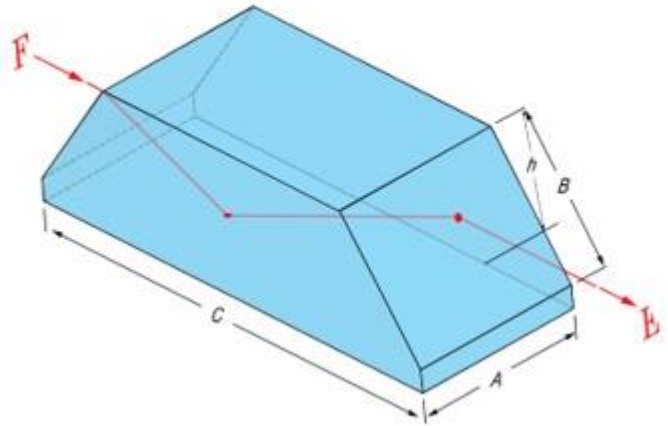
Material: H-K9L

Size Tolerance: +0.0/-0.2mm

Surface Figure: $\lambda/4@632.8\text{nm}$

Angle Tolerance: +/-3 min.

Chamfer: <0.25mmx45°



Part no	A (mm)	B (mm)	C (mm)	H (mm)
PRS5050-071-211-05	5.0	7.1	21.1	5.0
PRS5100-141-423-10	10.0	14.1	42.3	10.0
PRS5150-212-634-15	15.0	21.2	63.4	15.0
PRS5200-283-800-20	20.0	28.3	80.0	20.0

